



EXCLUSIVE FISHING BREAKS



EXCLUSIVE PRIVATE COUNTRY ESTATE ACCOMMODATION

Salmon and Trout Fishing

Exclusive accommodation

Situated in the Brecon Beacons National Park, this exclusive Estate is set in 400 acres of stunning parkland, has 5 miles of the best Trout and Salmon Fishing on the River Usk including the Private Park water.

You will have exclusive use of the river with our expert ghillie, Stuart (pictured right).

The price includes two nights accommodation in the main house, food and wine and fishing.

You will be staying in Penmyarth House throughout your stay and enjoy the history of the house and the fishing archives.

You will also have exclusive use of the 9 hole golf course. Should you wish to take advantage of shooting, archery, off road tracks, mountain biking or just enjoy the stunning walks throughout the Estate, this of course will be arranged for you.



Stuart Jarvis with Harry and Iona Legge-Bourke



Penmyarth House



One of the beats



A selection of hand tied flies, available during your stay along with full kit if required



The Grade II Listed Tower Bridge

Availability is weekends or weekdays. Minimum five in party.

A full catering sample menu is provided to be enjoyed either by the river, on Penmyarth Lawn or in the Dining Room at Penmyarth House.

Exclusively yours for £699 per person inc vat

The Fishing

The Estate has 5 miles of private river, one and a half miles of double bank Usk fishing, offering the visiting angler wonderful opportunities for both Brown Trout and Atlantic Salmon. Access to water is good with well maintained banks and some croys from which to fish.

For Usk Trout, the season starts on March 3rd and finishes on September 30th, the Salmon Season also starts on March 3rd, ending a few weeks later than the trout fishing on October 17th.



Stuart talking about the one that got away

"If you were to sit someone down and explain why you love to go fishing, what would you say?"

For me it is mainly about good company in beautiful surroundings. Although catching fish is secondary it is still important, so when everything comes together you will experience days whose memory will stay with you for the rest of your life....."

"The Legge-Bourkes are passionate country people with a deep love of all things rural."

"A sumptuous dinner was served in the dining room and, as invariably is the case when fishermen get together, there was only one topic of conversation.

The whole package is very special, from the beautiful estate and river to the exceptional comfort and hospitality of Penmyarth."

"The experience had turned out to be the epitome of what fishing means to me – and yes, I did catch fish, too."

A few quotes from the recent Trout and Salmon article featuring Glanusk Estate



Upper Beat



Stuart's flies

"The fishing at Glanusk Estate is some of the very finest for Brown Trout on the River Usk, and can provide excellent salmon fishing. There is one and a half miles of fast, streamy runs, long glides and deep holding pools. The banks are well maintained and trimmed; wading is generally good and vehicle access to the entire beat is permitted in suitable conditions. 2009 saw over eight hundred trout landed and salmon weighing in at 20lbs".

"I have been a ghillie on a number of rivers all my working life, with the last thirty seven years spent at Glanusk. During this time I have gained a great store of knowledge of all aspects of the beat, and can provide advice on all fishing methods, main taking places and suitable flies".

Stuart Jarvis, ghillie



Inside the Rod Room where you will meet your ghillie



Staying at Penmyarth House

Penmyarth House has eleven double or twin bed rooms and nine bathrooms (six ensuite) with further accommodation for seven people in two cottages within walking distance from the house.

The House contains many historical artefacts dating back hundreds of years including the large mahogany and copper bath.

The dining room can seat up to twenty four people and there are a number of other outstanding and alternative venues for entertaining within the park walls should you wish for a change of scene.



Sit outside on the veranda and enjoy the stunning views



The Drawing Room



View from Penmyarth Lawn

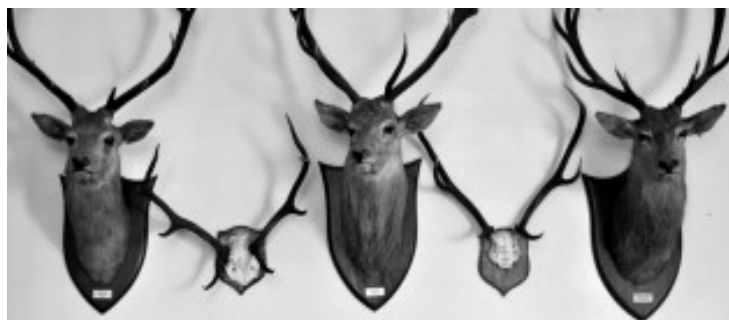
The Rod Room is adjacent to the main house and is an atmospheric location for lunches or warm cups of tea!! The Rod Room is a real treat.

You will meet the ghillie to hear river tactics and having enjoyed a hearty breakfast, be set for a fantastic day of fishing.

The tower overlooking the five mile private stretch of the River Usk, a listed building positioned on Tower Bridge is a quite spectacular fishing hut!!



First Floor at Penmyarth House



Inside the Rod Room



The Rod Room

The House is set in its own private gardens with spectacular views from all aspects. It overlooks the private golf course, the river and is surrounded by standing stones and historical buildings.

At the front of the house there is a large lawn should guests request to entertain with a marquee and share in the joy of the unrivalled views.

You may wish to make use of the squash and tennis courts.



Mahogany Bathroom



Dining Room



Twin Bedroom with Private Bathroom



Double Room with Park Views and Ensuite

Penmyarth House comes fully staffed and every need can be taken care of by the team.

Locally produced and delicious food is provided, a sample menu for full catering is provided for your pleasure.



Twin Bedroom with Private Bathroom

Penmyarth House was purchased with the rest of the Estate in 1836 by Joseph Bailey, Lord Glanusk, thus becoming Penmyarth Park on one side of the river and Glanusk Park on the other with the main house.

Penmyarth Church was also built in 1836 and the bridge was rebuilt in 1846.



Twin Bedroom with Private Bathroom



The Glanusk Estate

Sample Short Break suggested menu if you choose to dine at the Estate

Friday

*Guests shown to their rooms
Rod room available for fishing kit
Tea, coffee and cake on arrival*

Drinks in the drawing room (from 7.45pm)

*Selection of four canapés
Harry Legge-Bourke to discuss river tactics!*

Dinner (8.30pm)

Fish pie with quails eggs and locally sourced smoked fish topped with mashed potato, petit pois

Chocolate pots with shortbread curls

Locally produced cheese and biscuits

Coffee and chocolates in the drawing room

Saturday

Breakfast (from 8.00am or earlier if required)

*Eggs, bacon, sausages (all from the Estate Farm), tomatoes and mushrooms
Toast, homemade marmalade, Welsh honey and jams*

Elevensies to be brought to the river

*Flapjacks and brownies
Coffee/tea and water*

Picnic lunch to be brought to the river (ready from 12.00pm)

*Soup (if weather is cold) for people to help themselves
Paté, scotch eggs, mayonnaise/mustard and locally sourced treacle rolled ham
French bread and tomatoes*

*Finger size fruit cake, chocolate biscuits
Coffee/tea/water/soft drinks and fruit*

Tea (at the house say 5.00pm or by the river)

*Lemon drizzle squares, walnut squares
Coffee/tea and water*

Drinks in the drawing room (from 8.00pm)

Selection of four canapés

Dinner (8.30pm)

Asparagus mousse (from Crickhowell Valley) and melba toast

*Stuffed, boned Welsh loin of lamb
New potatoes, leeks and pea puree
Mint and redcurrant jelly*

Lemon tart and cream

Locally produced cheese and biscuits

Coffee and chocolates in the drawing room

Sunday

Breakfast (from 8.00am or earlier if required)

*Eggs, bacon, sausages (all from the Estate Farm), tomatoes and mushrooms
Toast, homemade marmalade and Welsh Honey and jams*

Elevensies to be brought down to the river

*Millionaires shortbread
Coffee/tea and water*

Picnic lunch to be brought to the river (ready from 12.00pm)

*Soup (if weather is cold) for people to help themselves
Rare roast beef, homemade horseradish or mustard*

*Welsh leek tartlets and honey sausages
Granary bread or rolls and tomatoes*

Raspberry and almond tart

Coffee/water/soft drinks and fruit

This menu is a suggestion and dependent on the season, we can tailor any menu to suit

The above is based on Friday night to Sunday after lunch but can also be mid week

A wine list is available

Where we are

Glanusk Estate
The Estate Office, Glanusk Park, Crickhowell
Powys, NP8 1LP

Tel: 01873 810414
Fax: 01873 811385

info@glanuskestate.com
www.glanuskestate.com

The Estate is:
2.5 hours from London
2 hours from Birmingham
1.5 hours from Cheltenham
1 hour from Bristol
45 minutes from Cardiff
40 minutes from Newport
40 minutes from Hereford

We have facilities to land a helicopter and light aircraft

The grid references are:
Lat: 51:52:03N (51.8676)
Lon: 3:10:31W (-3.1751)



